

**CLEVELAND[®]
CONTAINERS.**

CONTAINER HANDBOOK

FULL DETAILS ON OUR CONTAINERS,
DELIVERY DETAILS, AND XTRAS

We Box Clever[®]

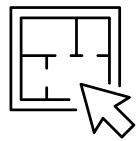
CLEVELAND® XTRAS

UPGRADE YOUR CONTAINER TODAY

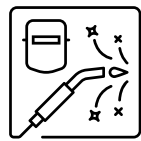
Shipping containers are strong, secure and weather-tight, so their applications are almost endless.

Our range of Xtras make it easy to add features for your specific needs, all executed by the best team of modification technicians in the business.

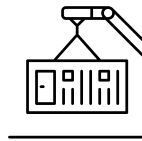
Our team will guide you through the process, start to finish, to create an innovative solution for you.



DESIGN



BUILD

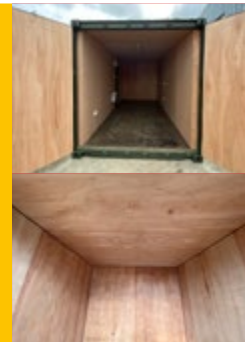


DELIVER



PLY-LINE & INSULATION

An ideal base for bespoke projects such as offices, workshops, restaurants, bars and much more. The temperature-controlled environment is essential for people working in the unit as well as being used for storage.



PERSONNEL DOORS

The addition of a personnel door creates an alternate access point and enables a quick entry, making it a valuable modification for many container projects. We also offer roller shutter and additional cargo door options.



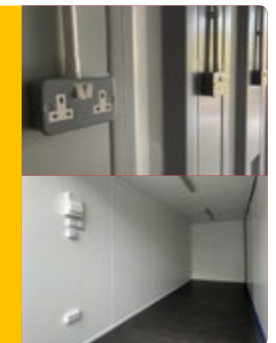
WINDOWS

Installing windows in a shipping container significantly enhances its functionality, improving the natural light and airflow. It transforms a basic container into a more versatile space, suitable for a wide range of applications.



ELECTRICS & LIGHTING

Adding electrics ensures you have the power you need for lighting, heating, cooling, and running essential appliances. Powering your container can turn a simple unit into an adaptable space, ready to meet your needs.



RACKING

Adding racking to a shipping container makes it a practical solution for optimising storage space and improving the organisation of stock. By storing items vertically, you can maximise capacity and locate stock quickly.



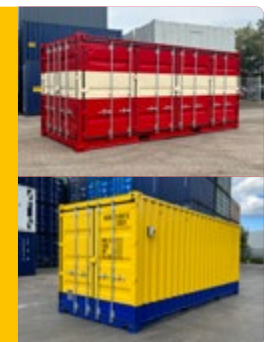
GRAFO-THERM

Treating container interiors with Grafo-Therm reduces condensation throughout the unit. The non-toxic spray absorbs excess moisture in the air to help keep sensitive contents, such as important documents, dry.



PAINTING

Our painting service allows you to customise your container to suit your surroundings or match your company branding. With a vast selection of RAL colours on offer, our team can create your perfect aesthetic.



FINANCE YOUR CONTAINERS TODAY

Working with Approved Business Finance couldn't be more simple. We won't surprise you with hidden fees or unpleasant surprises. Our goal is to make business finance simple and straightforward. You can apply for a quote without any obligation, and it won't affect your credit score.

APPLY IN SECONDS

You can complete a quick application online or give us a call on 01908 429 888. We'll ask for some basic information about you, your business, and your needs.

RECEIVE YOUR QUOTE

Once we have a better understanding of your business, we'll create a personalised solution to meet your specific requirements.

GET FUNDED FAST

If you're approved for financing, we'll deposit the funds into your preferred business bank account or pay a supplier directly on your behalf.

BENEFITS OF USING APPROVED

- Wide Range of Financing Options
- Competitive Interest Rates
- Flexible Payment Terms
- Personalised Service
- Quick and Easy Application Process

Our partnership with Approved Finance Group is just one way we're making shipping container purchases easy and stress free, getting you the containers you need, when you need them.

If you have any questions about our financing options, don't hesitate to reach out to our team. We're always here to help you find the right solution for your business.

FINANCE EXAMPLE | 10 x 20ft containers (weekly price per unit)

OVER 3 YEARS **£15.36**

OVER 4 YEARS **£11.94**

OVER 5 YEARS **£9.89**

Example pricing only. For up to date pricing, please speak to a member of our sales team. All prices are subject to VAT.

Rates are subject to status, and payments must be made by Direct Debit. The above rates are an example of a non-regulated deal only and applies to established companies trading for more than 3 years.

The level of tax relief may vary, and potential tax savings are based on qualifying purchases only. Please consult your accountant for full details.

CONTAINER CONDITIONS

ONE TRIP SHIPPING CONTAINERS

Our new shipping containers are all one trip containers, which means the container has been loaded with goods and completed one journey from the factory it was built in to the UK.

To keep the cost of moving the container to the UK to a minimum, the container will be fully loaded for the journey and then emptied once arriving at a UK port.

As these containers have spent 6 weeks on a ship and will have been picked up, moved around depots and stacked several times before being delivered to you, you may find minor scrapes, dents or scuff marks internally and or externally. However, these minor things fall within our quality tolerances for a one trip shipping container.

You may find:

- Minor scrapes or scratches externally and or internally
- Minor denting externally and or internally
- Minor scuff marks on the floor, walls and or ceiling internally
- Minor repairs to floorboards, walls or ceiling

Please note, all of the above falls within our quality tolerances for a one trip shipping container and does not impede the usage of the unit.



USED SHIPPING CONTAINERS

Our used shipping containers are a minimum age of 10 years old and will have spent their lifetime being shipped internationally.

These containers are still structurally sound and weatherproof, however, due to their age and previous use these containers will show signs of wear and tear. Even though cosmetically these containers don't look as good as a one trip shipping container they are still fit for purpose.

Please note that used containers may differ in colour, so if a specific colour is required we would recommend a respray or to purchase a one trip container.

You may find:

- Moderate scrapes or scratches externally
- Surface rust and or repair patches externally and or internally
- Moderate scuff marks on the floor or walls internally
- Stiffer door bars
- Moderate denting externally and or internally
- Floor boards repaired/replaced with different colour plywood
- Large logos or branding externally

Please be aware that the conditions mentioned above are within the acceptable quality standards for a used shipping container and do not affect its functionality. We cannot guarantee the specific condition or grade of used containers, as they are released from our depots on a 'Next Off Stack' basis. The images provided depict a 'Grade A' used shipping container. To ensure satisfaction, we recommend purchasing new (one trip) shipping containers.



PREPARING YOUR SITE FOR DELIVERY



BEFORE YOUR CONTAINER IS ON THE GROUND

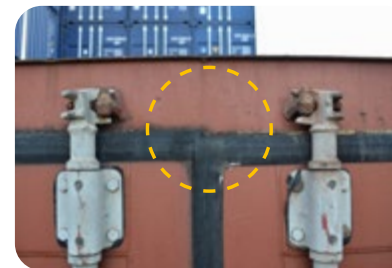
- Ensure the ground is hard standing i.e. tarmac, gravel etc.
- Ensure that all four corners of the container are strongly supported and level. This may require using bricks, railway sleepers etc. If the corners are not supported, you may find the doors are very stiff or even unable to open or close.

WHILE YOUR CONTAINER IS BEING POSITIONED

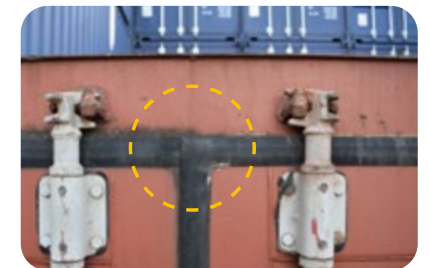
- We advise checking that the container doors open and close before the driver removes the chains from the roof of the container.
- Any levelling issues should be addressed while the container can be lifted and adjusted, as any return to your site will incur additional costs.

HOW TO TELL YOUR CONTAINER IS LEVEL

Looking at the doors of the container, you will see a black seal running around the edges of the doors. If the seal does not run smoothly around the edges of the doors when they are closed, this could mean the container is not level.



Container Not Level



Container Is Level

YOUR CONTAINER DELIVERY



FOR A SUCCESSFUL DELIVERY WE SUGGEST

- You ensure access is at least 12ft wide for our vehicles to enter the site
- Your site has no sharp turns
- Your site is on hardstanding, level ground
- There are no overhead cables above desired placement site
- At placement site, lorry must be able to extend their 6ft HIAB legs
- Please be aware our vehicles cannot drive over grass or into fields

HOW LONG WILL DELIVERY TAKE?

For standard containers, you will be told an estimated delivery lead time when you place your order. If your container is being modified, this will extend the lead time.

We strongly advise someone is on site during delivery, in case the driver needs any assistance due to restrictive access or any other issues that may arise at the time.

Please note we can only supply the container and deliver it to a UK address. Our drivers are able to deliver to specified docks or have them dropped for loading, but we cannot organise the international shipping of containers.

REPORTING ISSUES

If you wish to report any issues with the container, this has to be done via our [online help centre](#). Issues like stiff doors, unit condition, holes etc. should all be reported via the help centre so one of our team can then review and respond.

POTENTIAL CHARGES

If you report an issue via our help centre, our team will review the provided images and videos. If we believe there is no issue with the unit, we can still send an engineer to your site, but a standard call out fee of £200 will need to be paid first. If our engineer does find an issue with the container, this charge will be refunded and the issue rectified. If no issue is found, charges may be incurred for additional services, such as re-leveling your container.

TYPES OF TRUCKS WE USE FOR DELIVERY



HIAB ARTICULATED LORRY

An articulated lorry (Artic) is known for its two parts; a tractor and a trailer.

Artics are ideal for consistently large loads with its six axles and a maximum fully laden weight of 44 tonnes.

LENGTH	WIDTH	HEIGHT	REACH
65ft	12ft	14ft	29.5ft

Approximate measurements, may differ with truck manufacturer. Reach may differ due to weight/size of container.



HIAB LORRY & DRAG TRAILER

A rigid lorry with an added trailer attached to the back of the truck bed.

The trailer gives the rigid lorry flexibility as well as the ability to deliver more containers to site.

LENGTH	WIDTH	HEIGHT	REACH
59ft	12ft	14ft	29.5ft

Approximate measurements, may differ with truck manufacturer. Reach may differ due to weight/size of container.



HIAB RIGID LORRY

A rigid lorry. Its lack of flexibility between cab and trailer makes the driving experience similar to a car.

Significantly shorter than an artic, the rigid lorry has the ability to deliver containers where access is restricted.

LENGTH	WIDTH	HEIGHT	REACH
32ft	12ft	16ft	29.5ft

Approximate measurements, may differ with truck manufacturer. Reach may differ due to weight/size of container.

HOW DO I MAKE MY CONTAINER SECURE?



LOCKBOX & CONTAINER PADLOCK

All of our one trip containers come with a lockbox and they are available as an optional extra for used containers. Lockboxes are a metal shroud welded to the cargo doors protecting the padlock. When fitted it prevents forced entry through cutting the padlock on the container.

Shipping containers fitted with a lockbox would require a high security padlock to lock the container. We sell the Squire Stronghold container padlock that are CEN 4 rated (high security), keeping your container and contents protected. Please note container padlocks are sent via a separate courier (DHL).

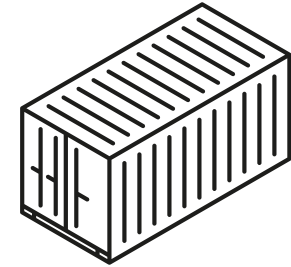
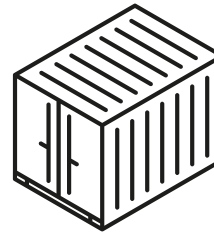
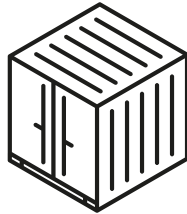
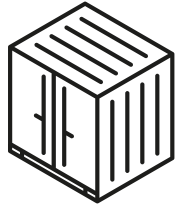


CONVENTIONAL PADLOCK

If a shipping container does not have a lockbox fitted and a standard padlock is used, the unit may not be totally secure, as the padlock will be left exposed and could be tampered with. We strongly advise fitting a lockbox and purchasing a high security padlock for your used container.

We can supply a lockbox after your container has been delivered for an additional charge.

OUR SHIPPING CONTAINER DIMENSIONS & FEATURES



6FT STANDARD

External Dimensions

Length	6ft 6ins	1980mm
Width	6ft 5ins	1970mm
Height	6ft 3ins	1910mm

Internal Dimensions

Length	5ft 11ins	1800mm
Width	6ft 1ins	1860mm
Height	5ft 8ins	1730mm

Weight 450kg

8FT STANDARD

External Dimensions

Length	8ft	2438mm
Width	7ft 2ins	2200mm
Height	7ft 5ins	2260mm

Internal Dimensions

Length	7ft 6ins	2287mm
Width	6ft 11ins	2112mm
Height	6ft 9ins	2062mm

Weight 900kg

10FT STANDARD

External Dimensions

Length	10ft	2991mm
Width	8ft	2438mm
Height	8ft 6ins	2591mm

Internal Dimensions

Length	9ft 4ins	2841mm
Width	7ft 9ins	2352mm
Height	7ft 10ins	2393mm

Weight 1500kg

20FT STANDARD

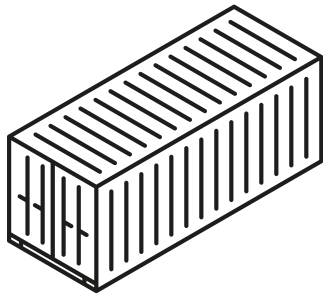
External Dimensions

Length	20ft	6058mm
Width	8ft	2438mm
Height	8ft 6ins	2591mm

Internal Dimensions

Length	19ft 4ins	5898mm
Width	7ft 9ins	2352mm
Height	7ft 10ins	2393mm

Weight 2185kg



30FT CUT DOWN

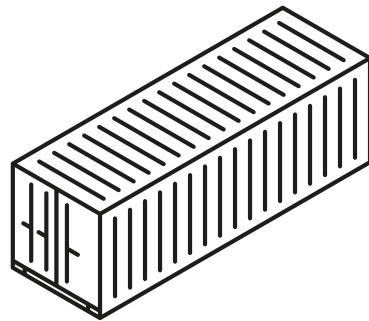
External Dimensions

Length	30ft	9144mm
Width	8ft	2438mm
Height	8ft 6ins	2591mm

Internal Dimensions

Length	29ft 5ins	8990mm
Width	7ft 9ins	2352mm
Height	7ft 10ins	2393mm

Weight 3200kg



40FT STANDARD

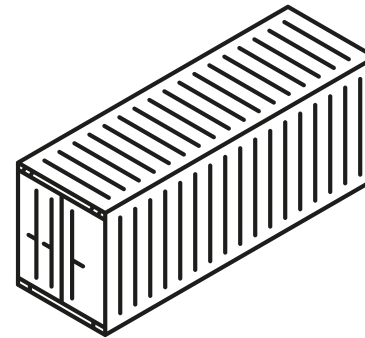
External Dimensions

Length	40ft	12192mm
Width	8ft	2438mm
Height	8ft 6ins	2591mm

Internal Dimensions

Length	39ft 6ins	12032mm
Width	7ft 9ins	2352mm
Height	7ft 10ins	2393mm

Weight 3620kg



40FT HIGH CUBE

External Dimensions

Length	40ft	12192mm
Width	8ft	2438mm
Height	9ft 6ins	2896mm









Internal Dimensions

Length	39ft 6ins	12032mm
Width	7ft 9ins	2352mm
Height	8ft 9ins	2634mm

Weight 3700kg

STANDARD FEATURES

All one trip containers include:

-  Easy Opening Doors
-  Up To 18 Air Vents
-  PU Coated Floors
-  Stronger Build Quality
-  Lockbox Included
-  Wind & Water Tight
-  Grease Nipples
-  Blue / Green Available

Part of the Cleveland group

CLEVELAND[®]

CLEVELAND[®] CONTAINERS.

Follow us on social media



We Box Clever[®]

Cleveland Group (Hire and Sales) Limited
23a Falcon Court, Stockton-on-Tees, TS18 3TX
T: 0330 005 5666 · E: sales@clevelandcontainers.co.uk

Cleveland Group (Hire and Sales) Limited is authorised and regulated by the Financial Conduct Authority (FRN: 98407).
We act as a lender. You may be able to obtain finance for your purchase from other lenders and you are encouraged to seek alternative quotations. If you would like to know how we handle complaints, please ask for a copy of our complaints handling process.
You can also find information about referring a complaint to the Financial Ombudsman Service (FOS) at financial-ombudsman.org.uk